



# THE NEED FOR RESEARCH AND INNOVATION SUPPORT

## AN EPICENTER OF DISCOVERY

By any measure, Northeastern University is home to a robust and thriving research enterprise.

We are focused on uncovering answers to worldwide challenges in health, security, and sustainability. We are making historic breakthroughs in the discovery of drugs to treat chronic infections. We are revolutionizing technology that can withstand both natural and human-made catastrophes. And we are probing the impact of global warming on urban coastlines and other ecosystems.

**But to keep investigation and knowledge creation flourishing at Northeastern, we seek the support of generous advocates who understand the importance of fueling research solutions that transform lives.**

Northeastern is thoughtfully pursuing increased backing from private donors and industry sources to amplify our ability to attract government grants. With the help of these powerful philanthropic partnerships, our research initiatives can better society and bring meaningful change to the world.

## MEASURES OF OUR MOMENTUM

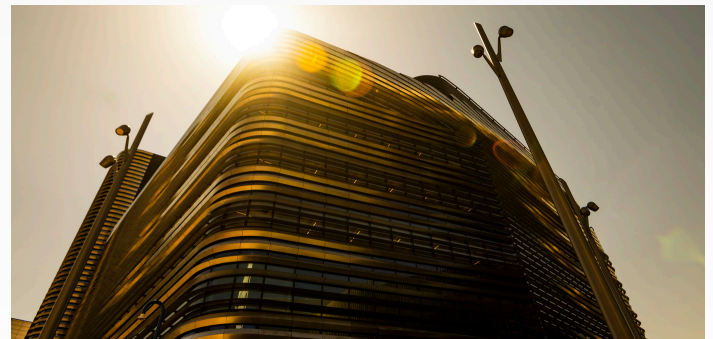
Northeastern’s research enterprise is grounded in the priority to solve our planet’s most urgent problems and to improve people’s lives. Our world-class faculty members are leading the charge with their path-breaking advances, both within their fields and across disciplines.

**\$230.7M** } in external research awards; up 374% since 2006

**\$176M** } in research expenditures from external funding; up 244% since 2006

**35+** } federally funded research centers

## EXP BUILDING POISED TO DRIVE RESEARCH AND DISCOVERY



EXP—Northeastern’s new 357,000-square-foot complex—offers eight floors dedicated to computational research; teaching and academic labs; 15,000 square feet of maker space; an “Ideation” space overlooking a ground-floor robotics area; and more.

In 2022, to help catalyze faculty research and innovation, Northeastern Board of Trustees Vice Chair **Alan McKim, DMSB’88**, committed \$25 million to establish eight new endowed chairs at the university. McKim’s gift will also strengthen Northeastern’s efforts to attract top talent to teach and conduct investigation across the university’s global campus network.





"I'm so pleased to lead the Sherman Center, and am excited to partner within and outside the university to expand our impact," says **Ted Johnson**, director of the Michael J. and Ann Sherman Center for Engineering Entrepreneurship Education. "The center has grown incredibly in the recent years, but this is only the tip of the iceberg."

## OPPORTUNITIES FOR SUPPORT

Innovation—the hallmark of Northeastern’s culture—fuels the engines of our creativity in education and research. Philanthropy is essential for enabling the kind of bold, calculated risk-taking that enriches learning, supports entrepreneurship, and furthers discovery. Support from alumni, friends, and industry and government partners will ensure that our remarkable momentum continues.

**Seed Funding for Research.** Northeastern is assembling teams of faculty from disparate fields—computer science and health-risk assessment, for example—whose lines of inquiry are yielding cutting-edge results. Seed funding from donors enables investigators to test inventive new hypotheses. Armed with preliminary data, they can compete for larger federal grants to move their research forward.

**New Degree Programs Emphasizing Research.** Northeastern grants degrees in more than 250 majors, and in over 200 graduate programs. Donors can help us develop groundbreaking degree programs and research initiatives in emerging disciplines. We recently launched a doctoral program in network science, for example, and one of the first master’s degrees in regulatory affairs for drugs, biologics, and medical devices.

**Modern Education-Delivery Systems.** Today’s students demand instruction on site, online, and in combined formats to drive their research across disciplines. To keep pace with the needs of students diverse in age, experience, and professional interests, Northeastern is experimenting with innovative course structures and “virtual classroom” digital technologies. Donors can help us prepare students for the careers of tomorrow.

**Facilities.** Some centers, such as the Center for Neglected Diseases, urgently need space for the cross-disciplinary study of data and ideas, while others require modernization and new equipment. Support from individuals, foundations, and corporations for academic facilities, research centers, and institutes will keep investigators at the forefront of invention and exploration.

## LEADING THE CHARGE

Northeastern’s supporters are advancing interdisciplinary faculty and student collaborations—as well as strategic partnerships with government, academia, and industry—to address global imperatives in health, security, and sustainability. Philanthropy is essential to meeting our goals in bold, dramatic ways, and it is vital to opening new, use-inspired lines of inquiry that improve lives.

**863** } tenured and tenure-track faculty hires since 2006—many of whom lead vibrant research endeavors

**96%** } increase in applications to research PhD programs since 2010



The Burnes Center for Social Change delivers programs in education, research, and advocacy, continuing namesake Nonnie Burnes’s vision of fighting for social justice and equity. “Social innovation is a learnable skill that can be taught, nurtured, and empowered,” says **Beth Noveck**, the center’s founding director.